

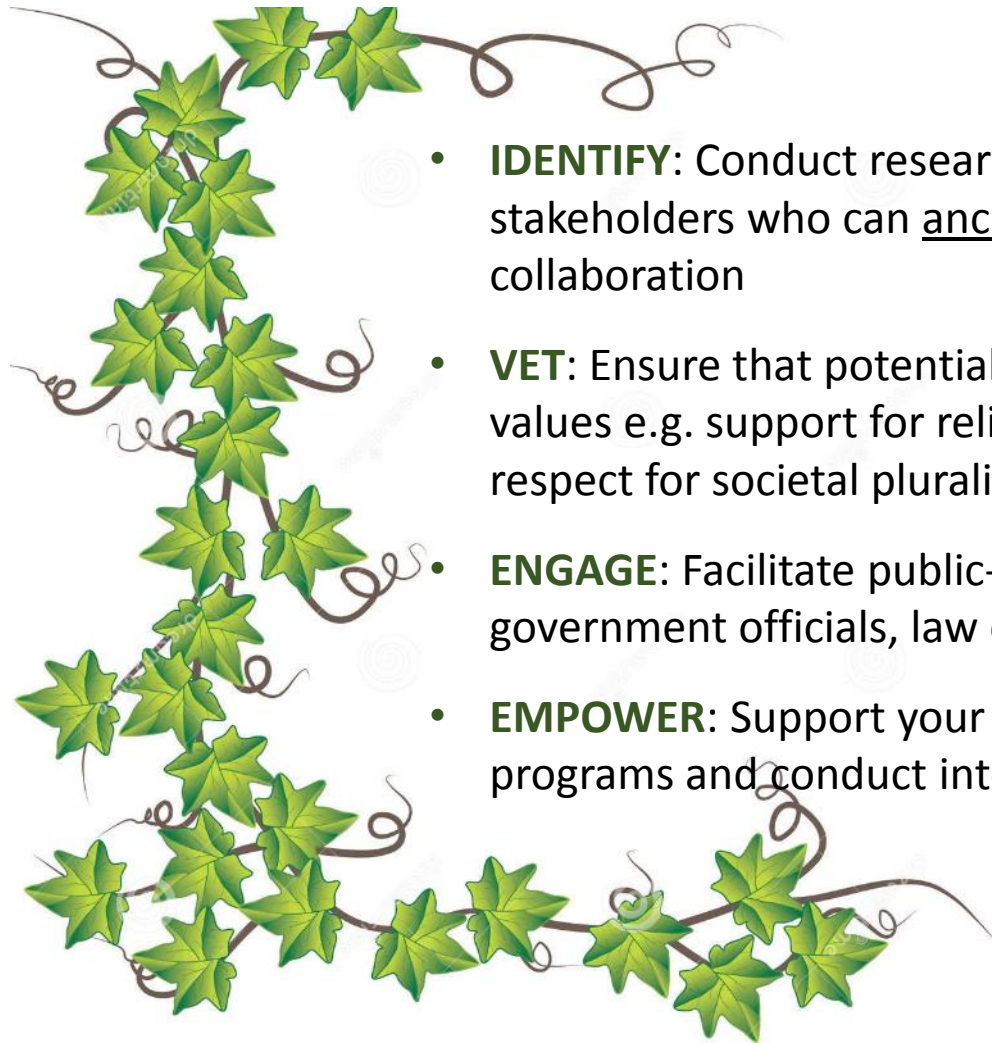
W  R D E

THE MONTGOMERY COUNTY MODEL

Presentation for LinCT

April 30, 2015

Identify, Vet, Engage and Empower (IVEE)



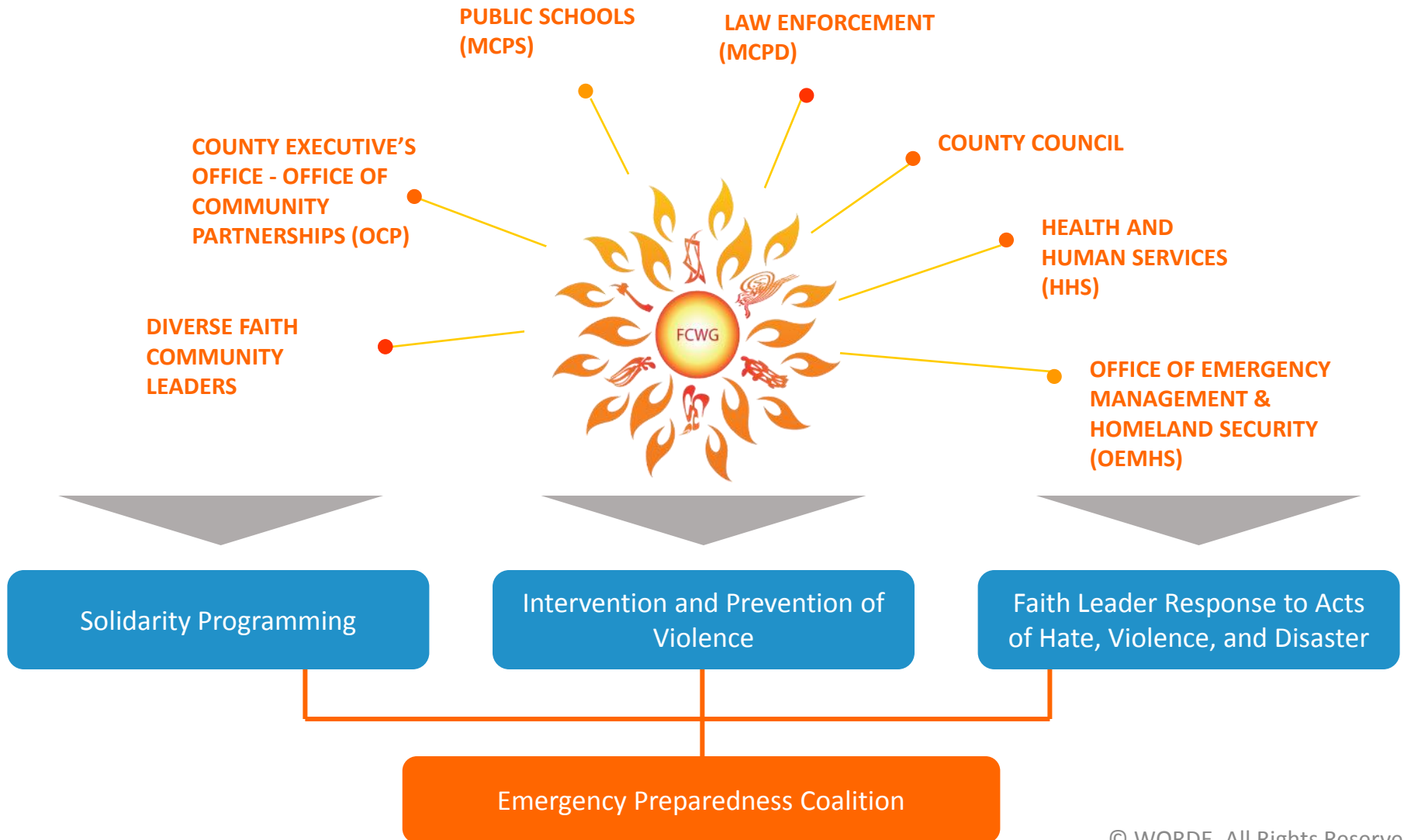
- **IDENTIFY:** Conduct research to identify 1-2 key stakeholders who can anchor the government-community collaboration
- **VET:** Ensure that potential partners uphold a set of shared values e.g. support for religious freedom of all persons, respect for societal pluralism, etc.
- **ENGAGE:** Facilitate public-private partnerships with government officials, law enforcement and the community
- **EMPOWER:** Support your key partners to execute programs and conduct interventions

Essential Components- “Promoting Social Cohesion and Public Safety”



- Include non-law enforcement partner(s) to convene diverse stakeholders but allow community to lead programming
- Develop a broad coalition of public/private partners to expand access points and reduce stigma on Muslim community
- Create trust amongst stakeholders through consistent engagement and collaboration *beyond* VE
- Determine your CVE framework to use for training, referrals and measuring effectiveness
- Engage universities to help measure program effectiveness
- Support programming with public/private funding
- Need a structured intervention program

Programs and Partners of the Faith Community Working Group (FCWG)



Early Warning System through Four Interrelated Parts



Trainings/Workshops

TRAINING CONDUCTED BY WORDE

- Islamic Culture and Risk Factors of Radicalization
- Assessing VE risks and Intervention Protocols for School Resource Officers
- Recognizing the Warning Signs of Violent Extremism for HHS workers and school counselors

COMMUNITY WORKSHOPS

- Social Media Training for Muslim Community Leaders to defeat VE online
- Understanding the ISIS threat to the Homeland
- Internet Safety by District Attorney and Department Homeland Security
- Understanding Violent Extremism by FBI
- Responding to Mental Illness training by the Crisis Intervention Team (CIT) of the MC Police Department
- Disaster preparation by the Office of Emergency Management/Homeland Security (OEMHS)
- Certification to be an Emotional Spiritual Care Volunteer in case of natural or man-made disaster
- Securing houses of worship against threat of harm to property or people

Measuring Effectiveness: A Multi-method Approach

OUTPUTS

Since inception of the Model in April 2013:

- Over **1800 people** have attended **20 events** we hosted
- **375+ people** have been trained in the risk factors of radicalization
- Over **50+ youth and families** have received social services from us

MEASURING TOOLS

- Qualitative and Quantitative data of participant satisfaction.
- Focus groups, surveys and interviews to evaluate efficacy in reducing social tension, encouraging help-seeking behaviors, and promoting public-safety.
- Pre/post clinical assessment in acculturation stress and radicalization
- Other clinical assessments to measure general well being and coping skills.

What Lies Ahead?

HVE cases will continue to increase, which will require structured intervention or diversion programs in many major urban cities.

Establishing Lanes of Authority and Cooperative Agreements between community and law enforcement

Metrics-Validating Assessment tools for Monitoring and Evaluation

Managing expectations of privacy, national security concerns and quality care



THE WORLD ORGANIZATION FOR
RESOURCE DEVELOPMENT AND EDUCATION



Questions & Comments:

hedieh@worde.org

www.worde.org